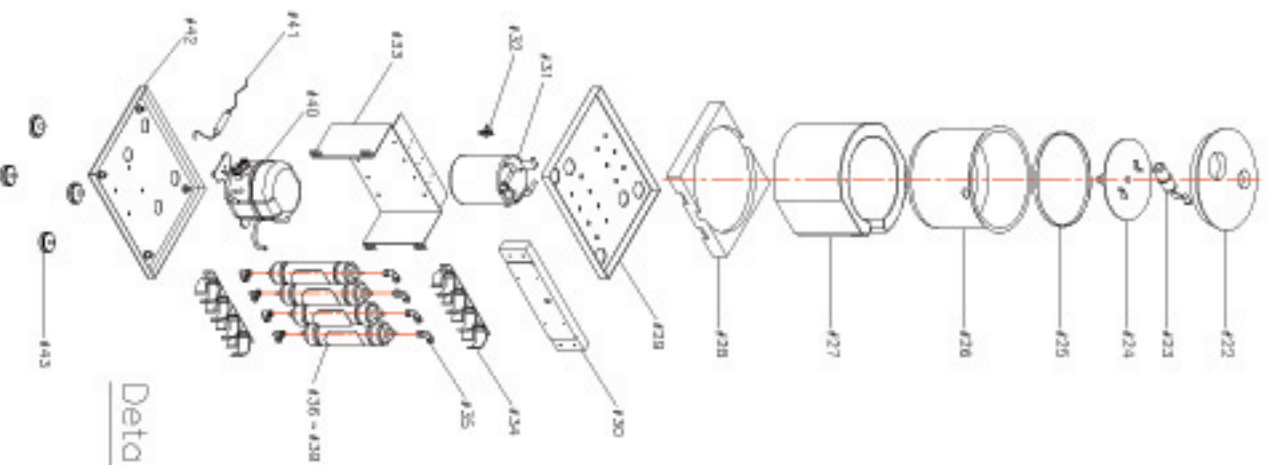
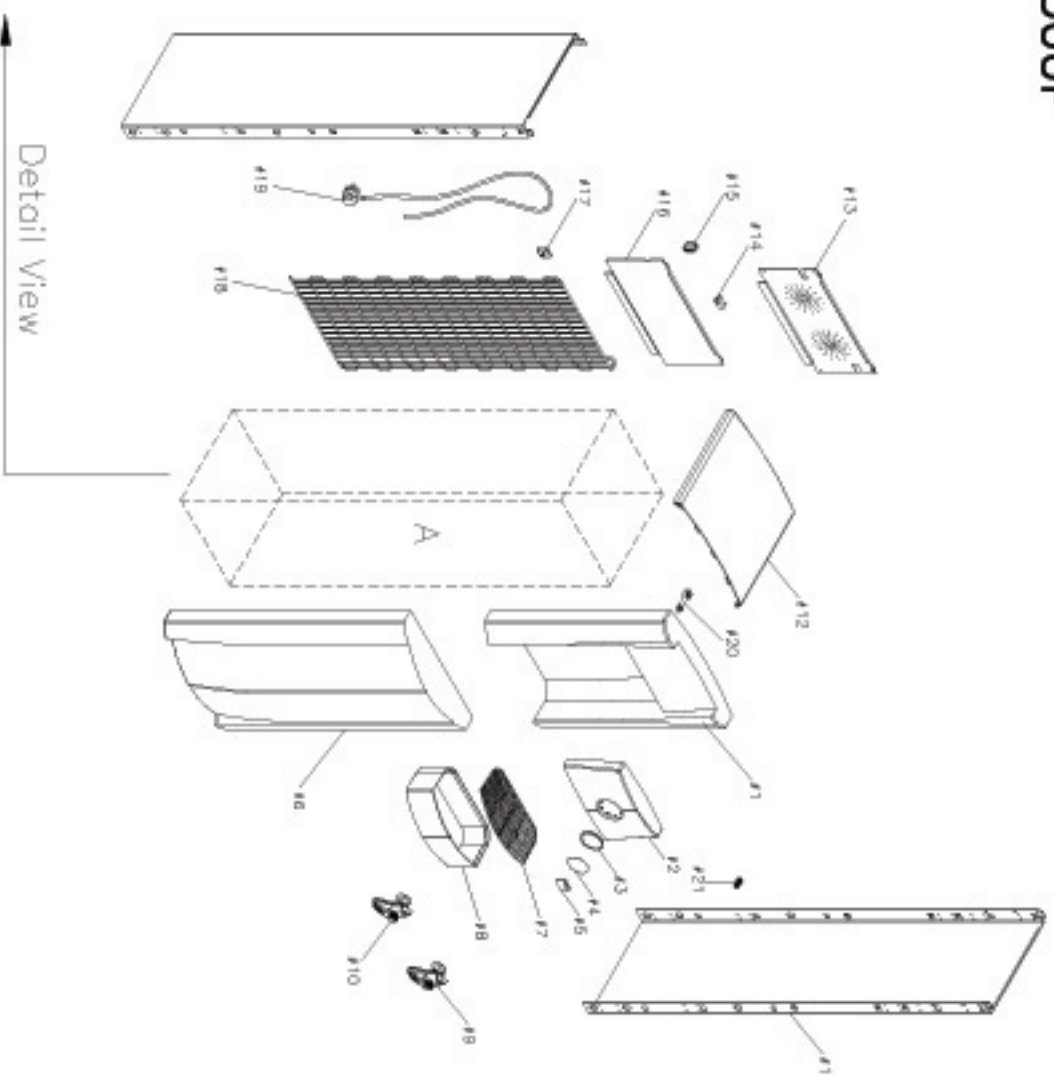


# W2-300P



Detail A



Detail View

|    |                        |
|----|------------------------|
| 1  | Upper Part Panel       |
| 2  | Upper Part Panel Cover |
| 3  | LED Cover              |
| 4  | LED Clear Cover        |
| 5  | LED PCB                |
| 6  | Under Part Panel       |
| 7  | Water Tray Net         |
| 8  | Water Tray             |
| 9  | Faucet(COLD)           |
| 10 | Faucet(HOT)            |
| 11 | Side Panel             |
| 12 | Top Panel              |
| 13 | Back Panel             |
| 14 | Cold Thermostat        |
| 15 | Hot Switch             |
| 16 | Control Panel          |
| 17 | Drain Valve            |
| 18 | Wire Condensor         |
| 19 | Power Cord             |
| 20 | Water Outlet           |
| 21 | Bulk Head              |
| 22 | Cold Tank Cover        |
| 23 | Floot                  |
| 24 | Separate Plate         |
| 25 | Ring Paking            |
| 26 | Cold Tank              |
| 27 | Cold Tank Logging(R)   |
| 28 | Cold Tank Logging(S)   |
| 29 | Middle Shelf           |
| 30 | Joint Panel            |
| 31 | Hot Tank               |
| 32 | Bimetal                |
| 33 | Filter Bracket         |
| 34 | Filter Clip            |
| 35 | L Fitting              |
| 36 | Sediment Filter        |
| 37 | Pre Carbon Filter      |
| 38 | UF Membrane Filter     |
| 39 | Post Carbon Filter     |
| 40 | Compressor             |
| 41 | Dryer                  |
| 42 | Bottom Panel           |
| 43 | Control Wheels         |